



Week 1 & Week 2 Forecast for the Philippines using GEFS Model



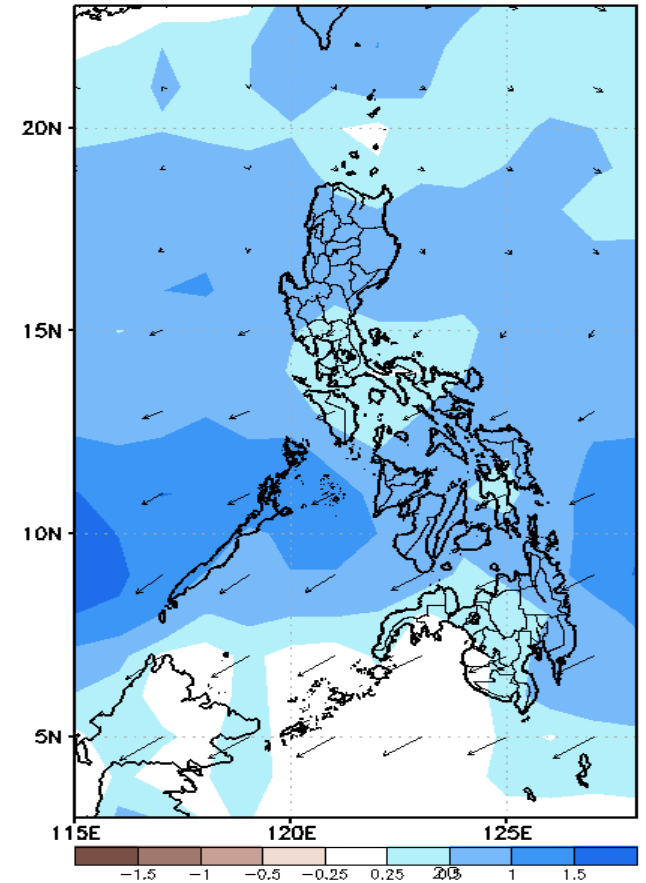
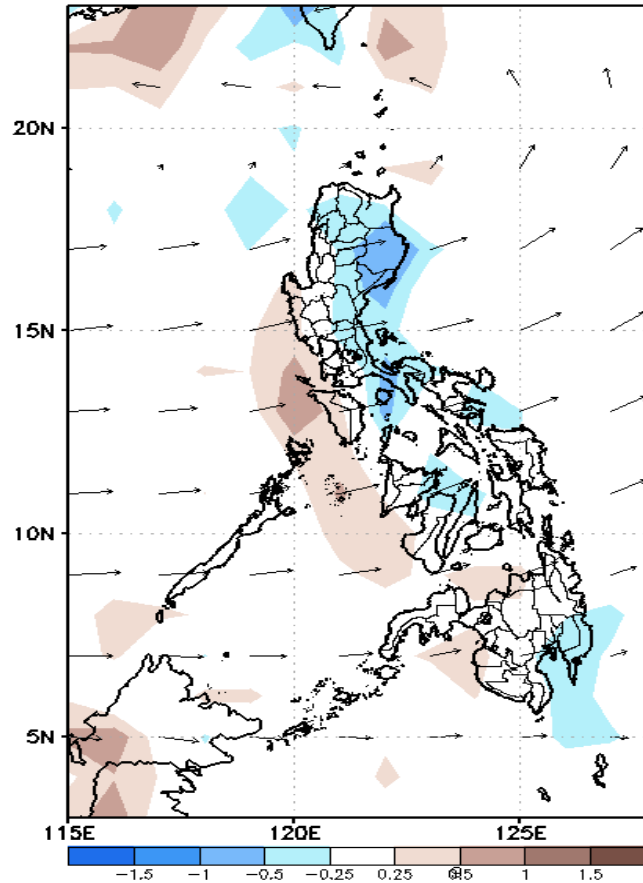
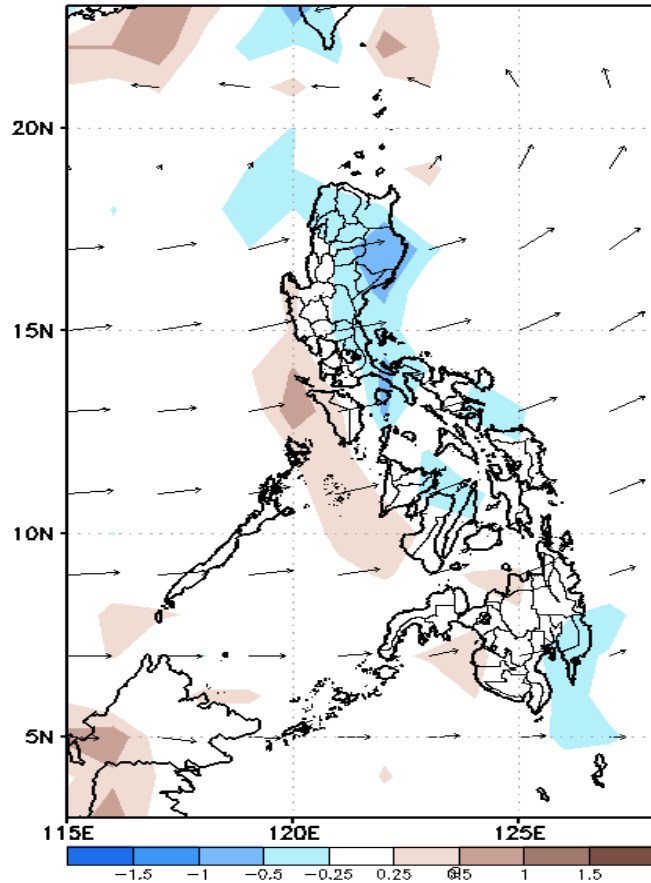
GEFS Week-1 Forecasts: Divergence & Wind Anomaly

Week 1: Oct 11-17, 2021

GEFS Week-1 850-hPa Divergence and Wind Anom
Valid: 20211011 - 20211017

GEFS Week-1 700-hPa Divergence and Wind Anom
Valid: 20211011 - 20211017

GEFS Week-1 200-hPa Divergence and Wind Anom
Valid: 20211011 - 20211017

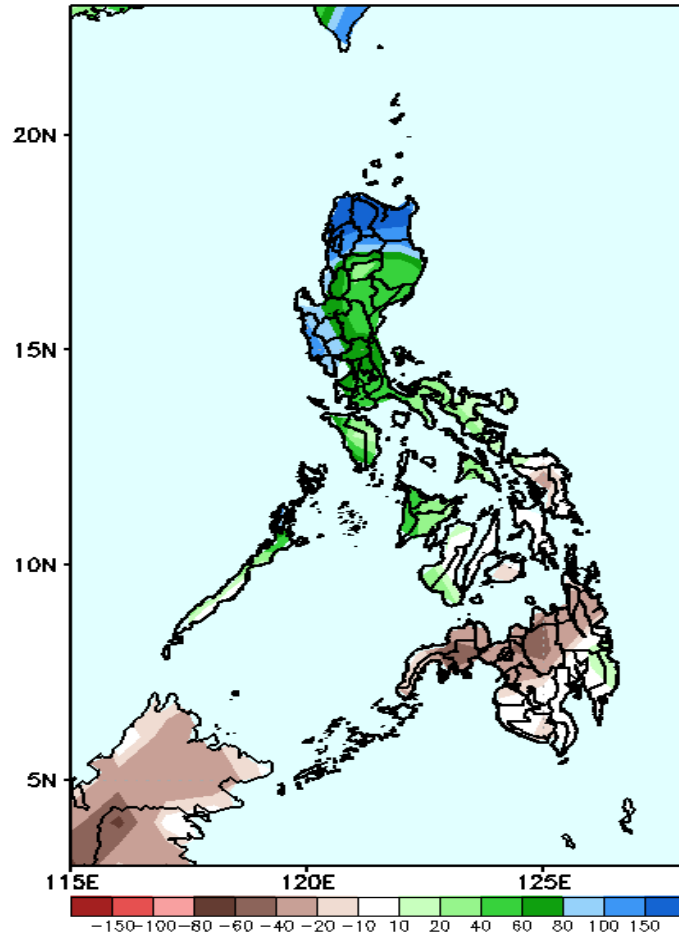


Upper and low level Divergence suggest likelihood of moderate to heavy precipitation in most parts of the country. Enhanced southwest monsoon affecting western sections of the country during the forecast period.

Precipitation Anomaly and Exceedance Probability > 25/50 mm

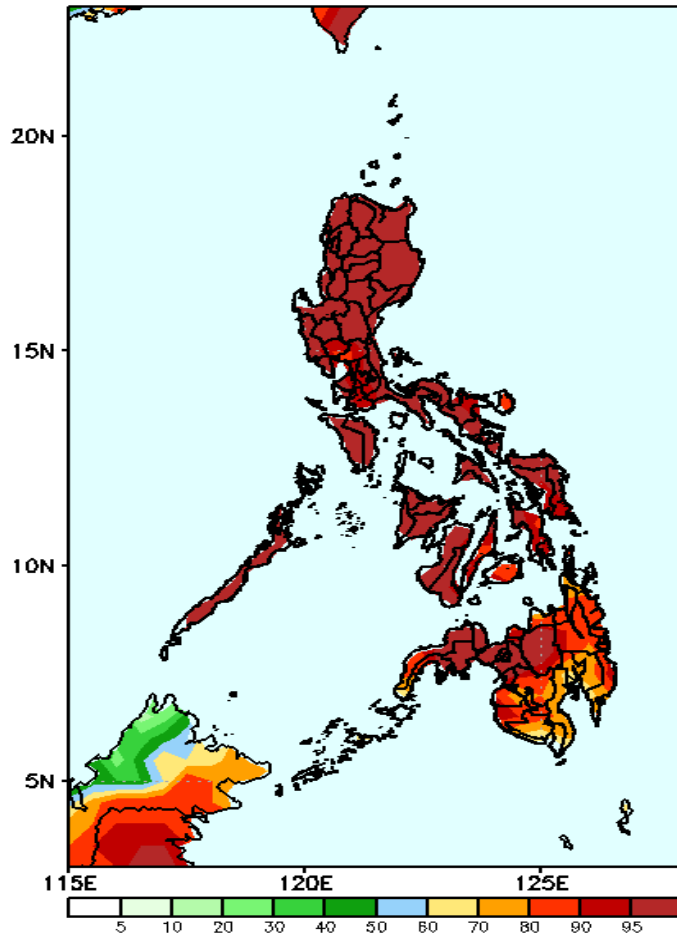
Week 1: Oct 11-17, 2021

GEFS Week-1 Precip Anomaly
Valid: 20211011 - 20211017



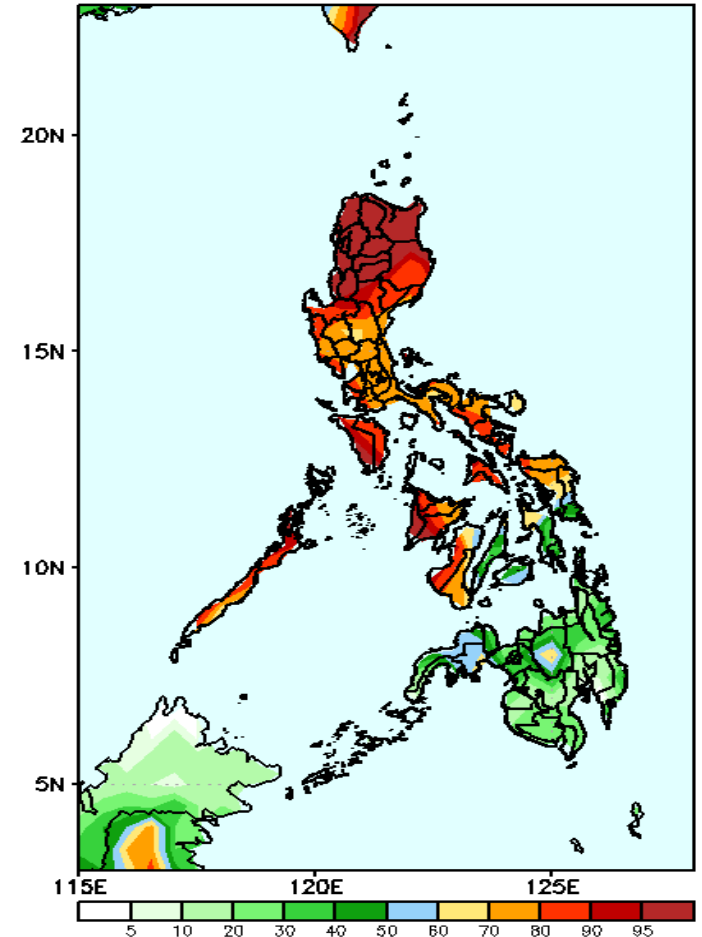
Increase of rainfall of 100-150mm in Northern Luzon, Pangasinan, Zambales, Tarlac and Pampanga, 40-80mm is expected in the remaining parts of Luzon and western Visayas while 40-80mm rainfall deficit in Easter Visayas & Mindanao during the forecast period.

GEFS Week-1 Exceedance Prob. > 25mm
Valid: 20211011 - 20211017



High probability of rainfall to exceed 25mm in most parts of the country during the forecast period.

GEFS Week-1 Exceedance Prob. > 50mm
Valid: 20211011 - 20211017

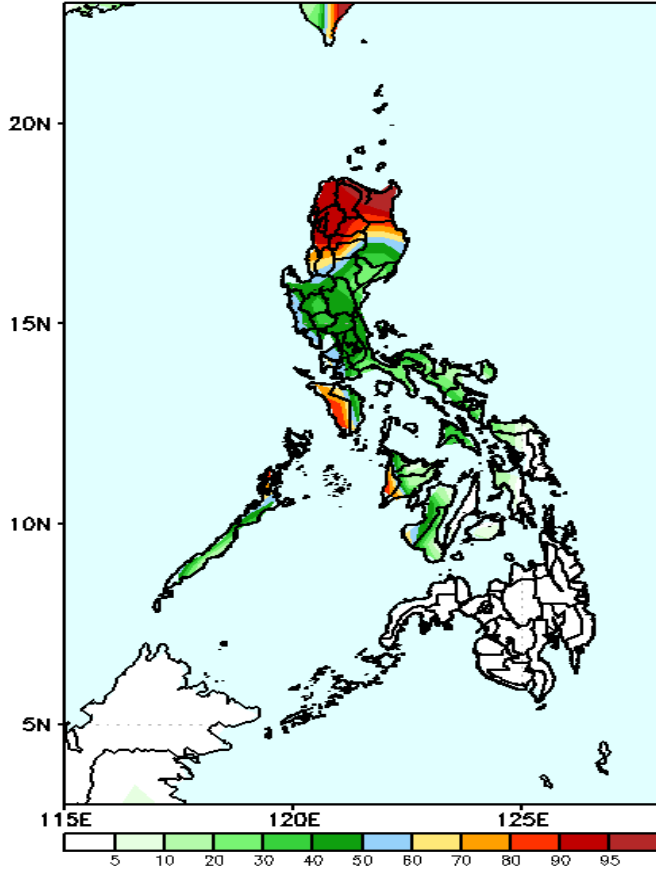


High probability of rainfall to exceed 50mm in most parts of Luzon, in Western and Eastern Visayas while less likely for the rest of the country during the forecast period.

Exceedance Probability > 100/150/200 mm

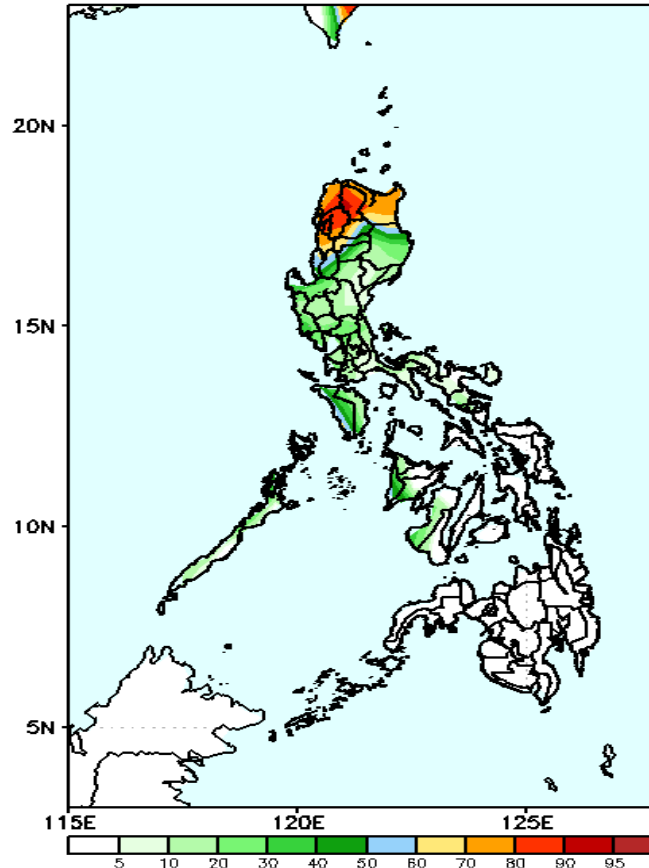
Week 1: Oct 11-17, 2021

GEFS Week-1 Exceedance Prob. > 100mm
Valid: 20211011 - 20211017



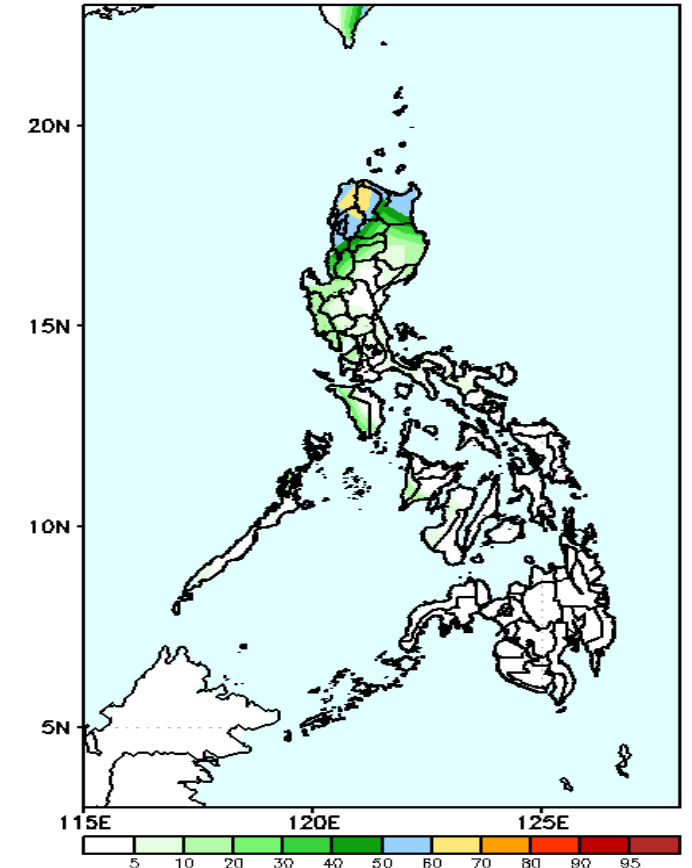
High probability of rainfall to exceed 100mm in most parts of Ilocos & Cordillera Region, Cagayan valley, Occidental Mindoro & Antique while less likely for the rest of the country during the forecast period.

GEFS Week-1 Exceedance Prob. > 150mm
Valid: 20211011 - 20211017



High probability of rainfall to exceed 150mm in the provinces of Ilocos Norte, Apayao, Cagayan & Abra, while less likely for the rest of the country during the forecast period.

GEFS Week-1 Exceedance Prob. > 200mm
Valid: 20211011 - 20211017

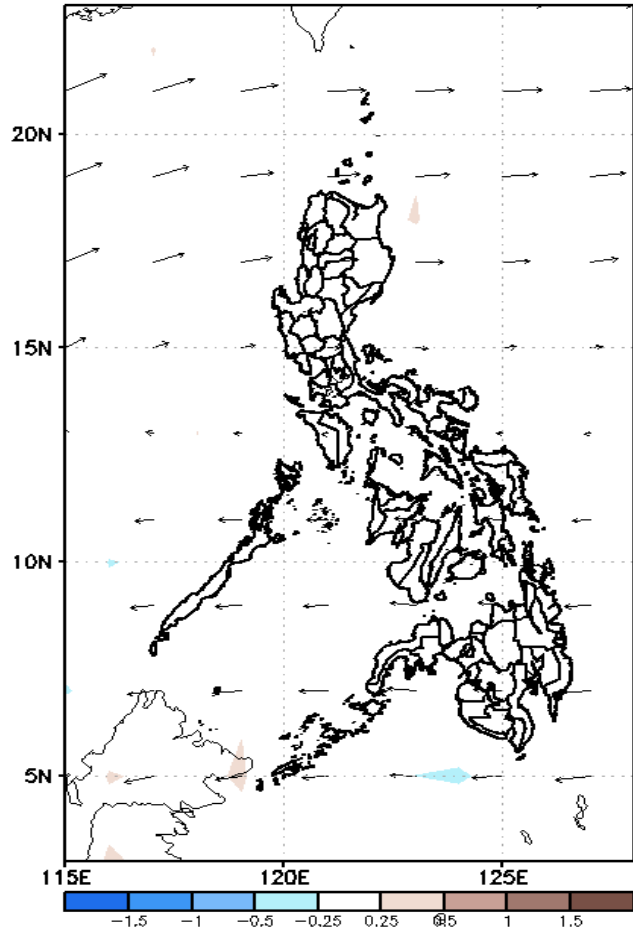


Less probability of rainfall to exceed 200mm in most parts of the country is expected during the forecast period.

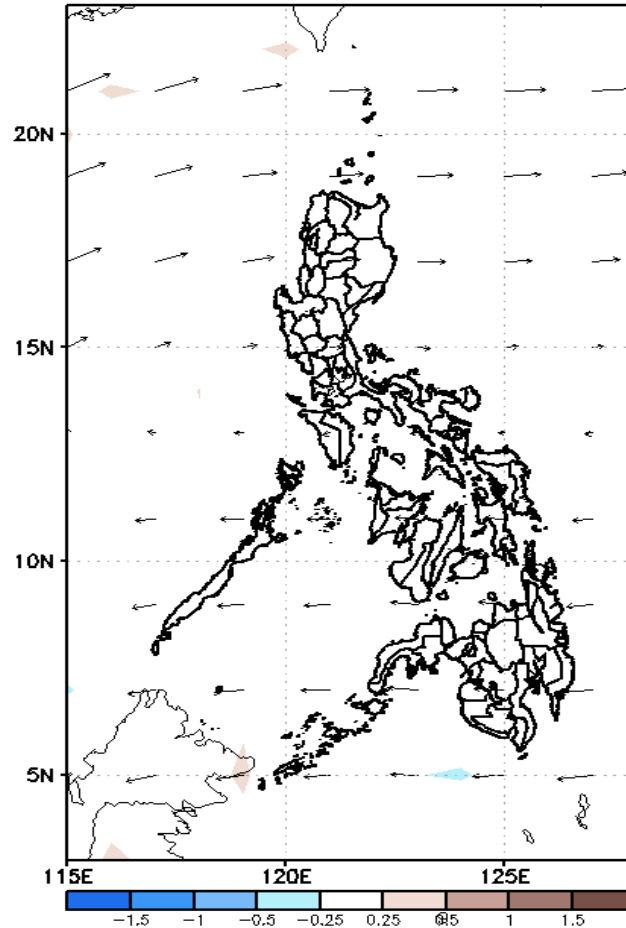
GEFS Week-2 Forecasts: Divergence & Wind Anomaly

Week 2: Oct 18-24, 2021

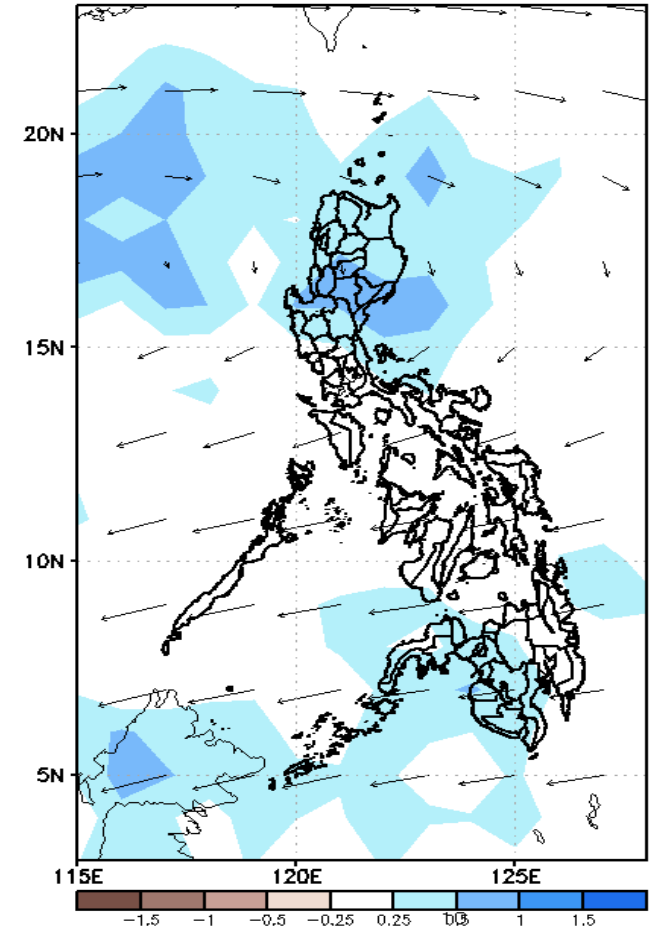
GEFS Week-2 850-hPa Divergence and Wind Anom
Valid: 20211018 - 20211024



GEFS Week-2 700-hPa Divergence and Wind Anom
Valid: 20211018 - 20211024



GEFS week-2 200-hPa Divergence and Wind Anom
Valid: 20211018 - 20211024

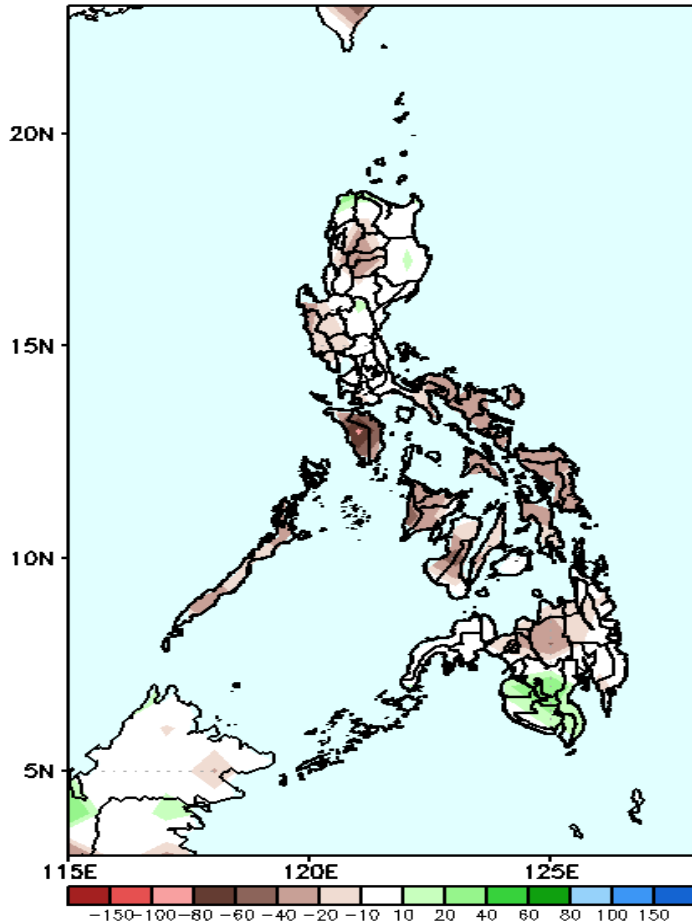


Upper and low level Divergence suggest likelihood of precipitation in most parts of Luzon and Mindanao. Easterlies affecting most parts of the country attributing to light to moderate rains due to thunderstorms during the forecast period.

Precipitation Anomaly and Exceedance Probability > 25/50 mm

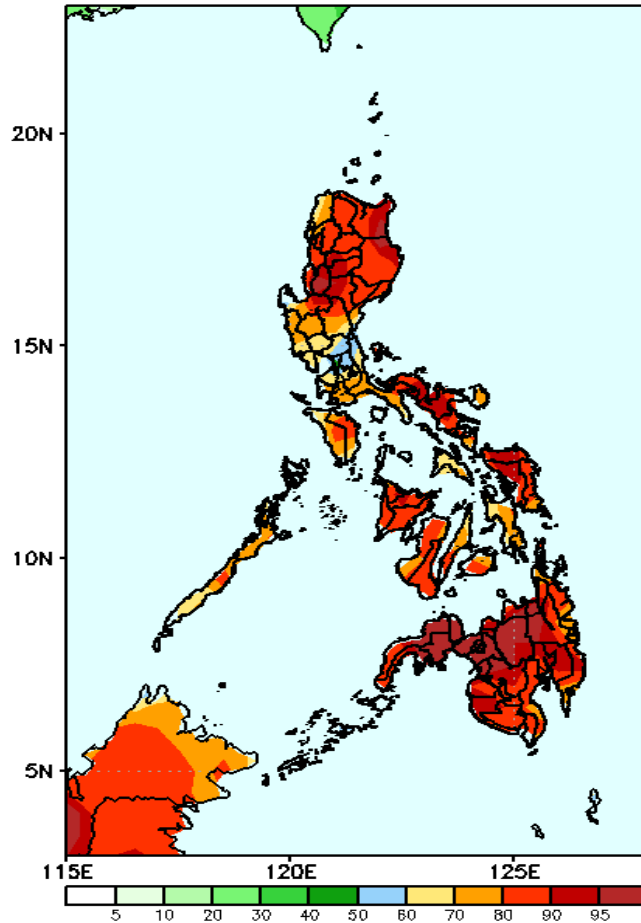
Week 2: Oct 18-24, 2021

GEFS Week-2 Precip Anomaly
Valid: 20211018 - 20211024



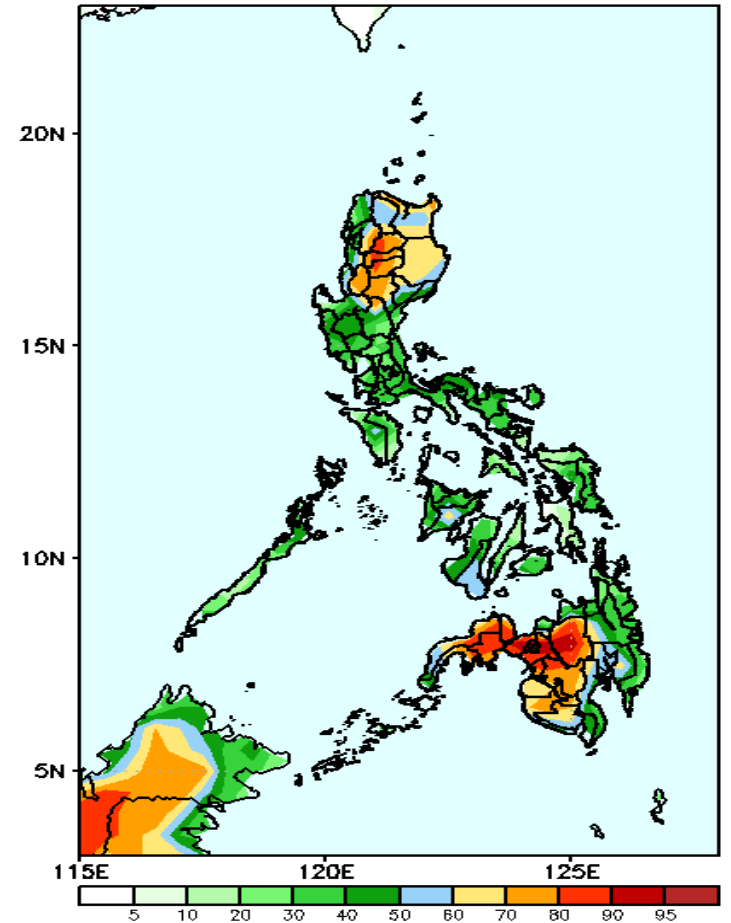
Rainfall deficit of 20-80mm in Cordillera Region, most parts of Visayas and Isabela during the forecast period.

GEFS Week-2 Exceedance Prob. > 25mm
Valid: 20211018 - 20211024



High probability of rainfall to exceed 25mm in most parts of the country during the forecast period.

GEFS Week-2 Exceedance Prob. > 50mm
Valid: 20211018 - 20211024

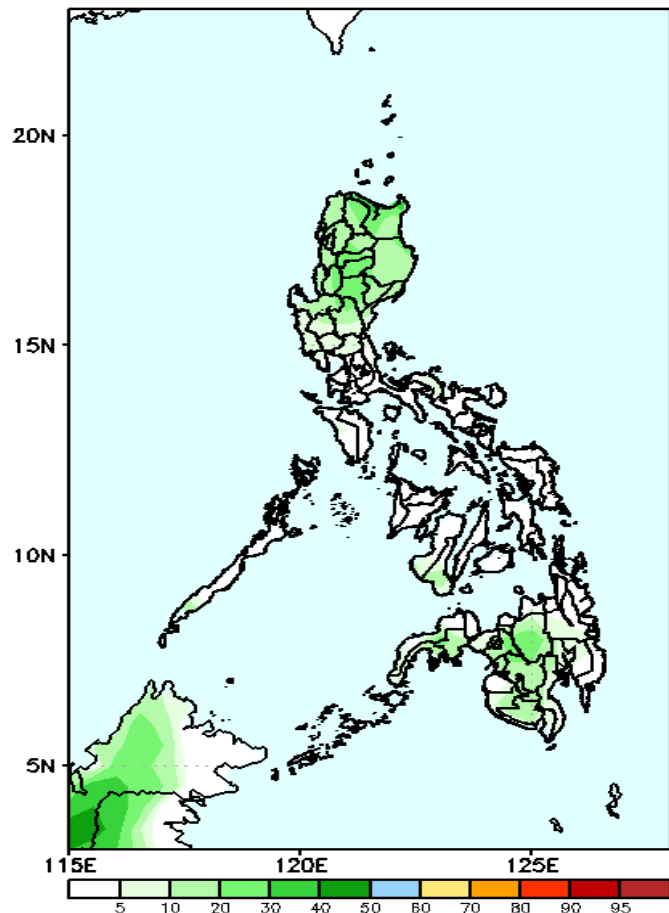


High probability of rainfall to exceed 50mm in most parts of Cordillera Region, Isabela and western parts of Mindanao including Bukidnon while less likely for rest of the country during the forecast period.

Exceedance Probability > 100/150/200 mm

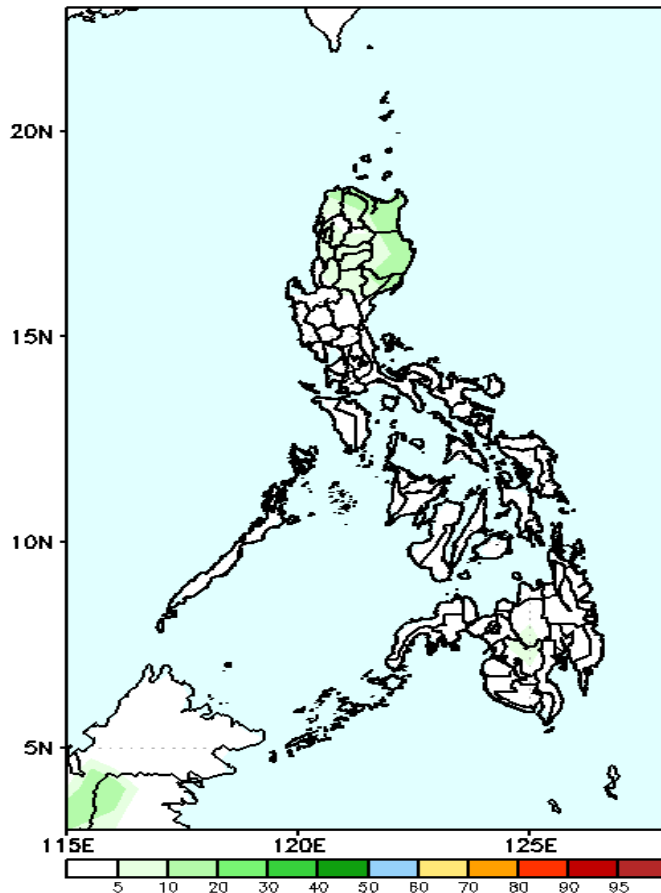
Week 2: Oct 18-24, 2021

GEFS Week-2 Exceedance Prob. > 100mm
Valid: 20211018 - 20211024



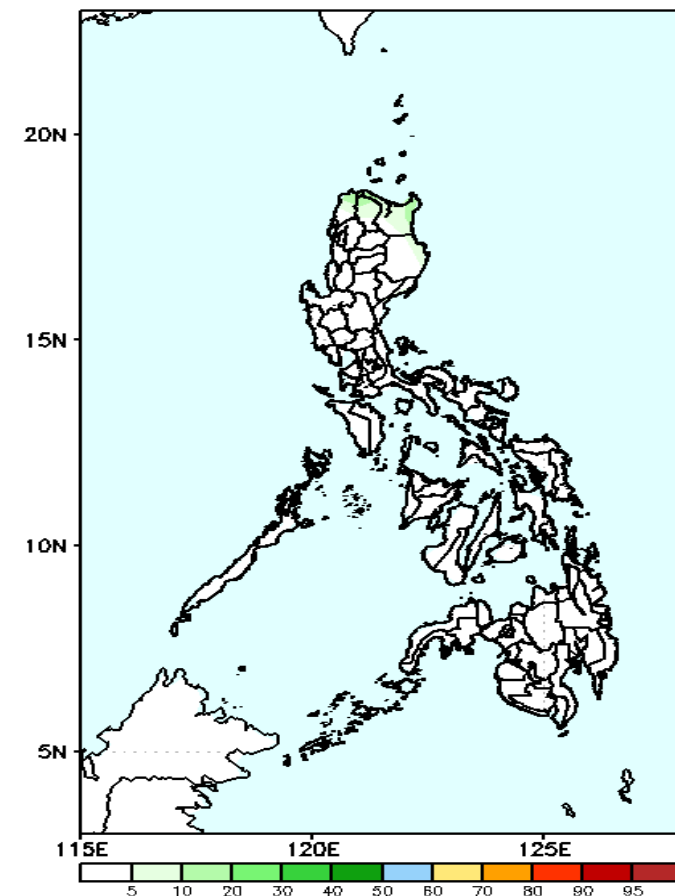
Less probability of rainfall to exceed 100mm in most parts of the country is expected during the forecast period.

GEFS Week-2 Exceedance Prob. > 150mm
Valid: 20211018 - 20211024



Less probability of rainfall to exceed 150mm in most parts of the country is expected during the forecast period.

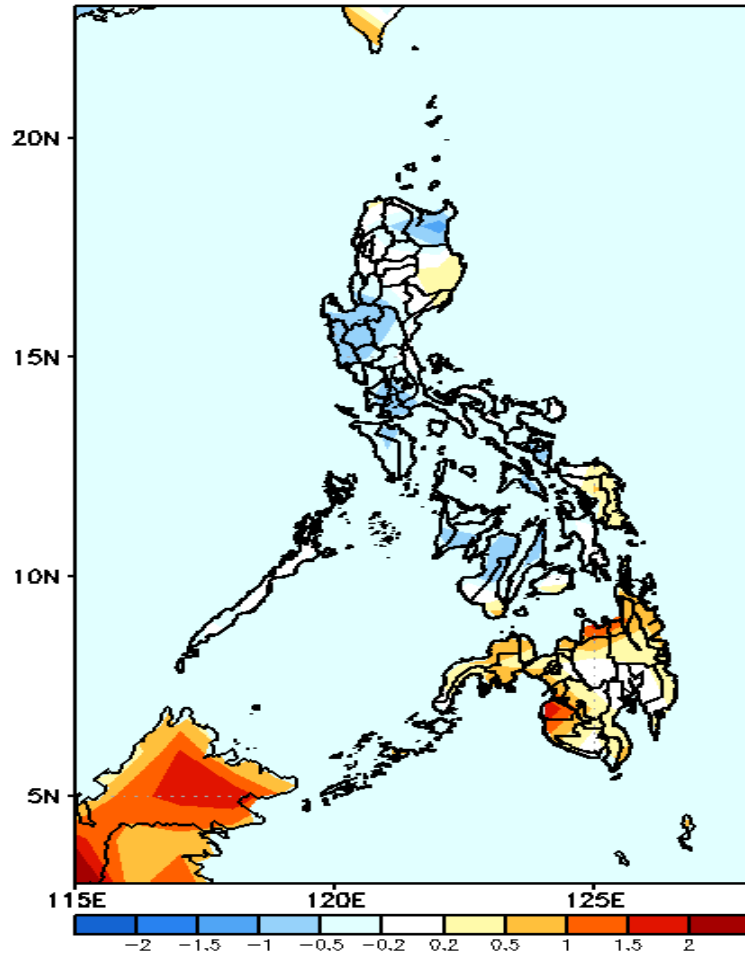
GEFS Week-2 Exceedance Prob. > 200mm
Valid: 20211018 - 20211024



Less probability of rainfall to exceed 200mm in most parts of the country is expected during the forecast period.

GEFS Week-1 & 2 Forecasts: T2m Anomaly

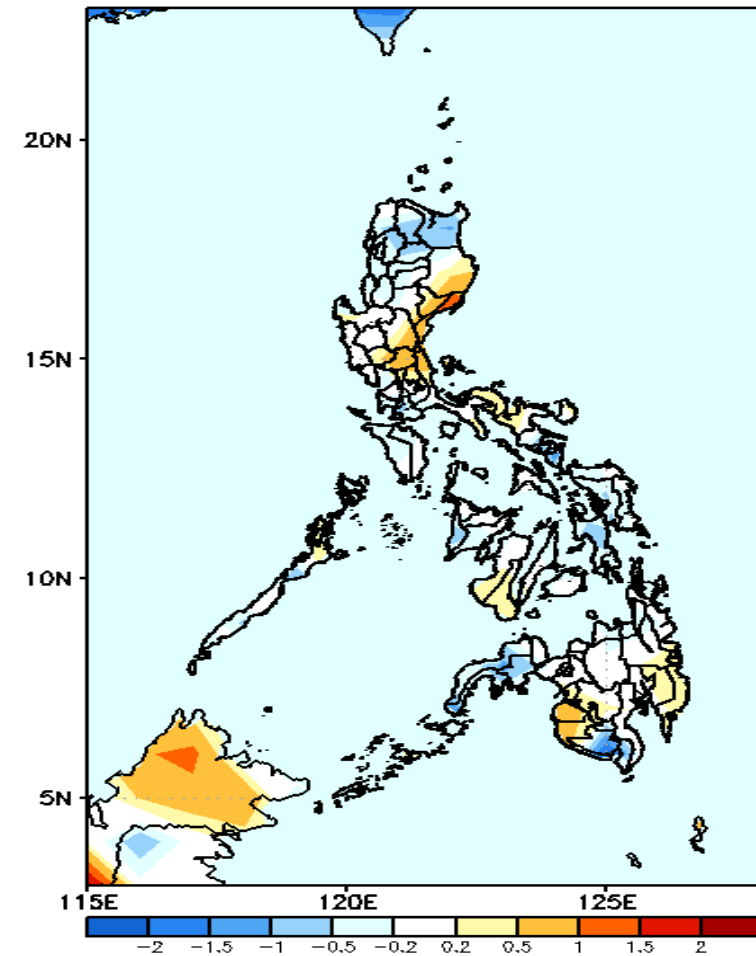
GEFS Week-1 T2m Anomaly
Valid: 20211011 - 20211017



2m Temperature Week 1: Oct 11-17, 2021

Slightly cooler to cooler than average surface air temperature will likely experience in most parts of Luzon (except Isabela) and Visayas (except Eastern Luzon) while slightly warmer to warmer than average temperature in most parts of Mindanao during the forecast period..

GEFS Week-2 T2m Anomaly
Valid: 20211018 - 20211024



2m Temperature Week 2: Oct 18-24, 2021

Average to slightly cooler than average surface air temperature will likely experience in most parts of the country except in eastern parts of Isabela & Central Luzon, Maguindanao & Sultan Kudarat where slightly warmer temperature is expected .